

2675/A

MORSETTO PER APPARECCHI DI ILLUMINAZIONE

TERMINAL BLOCK FOR LIGHTING FIXTURES

Dati tecnici

Technical data

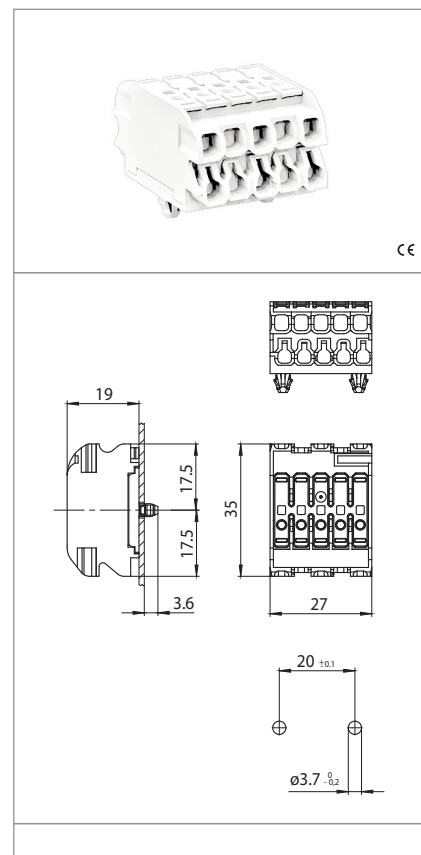
- Poli - Poles	4P+T
- Corrente e tensione nominale - Rated current and voltage	16A-450V
- Temperatura massima di funzionamento (IEC) - Maximum operating temperature (IEC)	T85
- Grado di protezione - Protection index	IP20


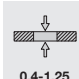
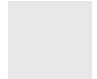
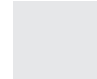
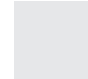
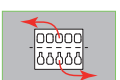
Caratteristiche

Characteristics

- Corpo in policarbonato bianco
– White polycarbonate body
- Corpo serrafiolo in rame/acciaio stagnato
– Internal part in tin plated copper/steel

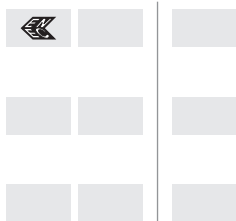
Per specifiche cavetti vedi info tecniche del capitolo
For wires' specs. see the chapter technical info



 fissaggio ad innesto <i>push-in fixing</i>	 spessore lamiera di fissaggio <i>fixing metal plate thickness</i> 0,4-1,25			
serrafiolo lato superiore <i>upper side terminals</i>	SERRAFILO <i>TERMINALS</i>	serrafiolo lato inferiore <i>lower side terminals</i>		
spelatura cavetti cordati, solidi e flessibili <i>stranded, solid and flexible wires stripping</i>	9-10 sezione conduttore cordato solido e flessibile <i>stranded, solid and flexible conductor section</i>	0,5-2,5 mm ²	 1,5-2,5 mm ² sezione conduttore cordato e solido <i>stranded and solid conductor section</i>	9-10 spelatura cavetti <i>wires stripping</i>

Marchi di qualità

Quality marks



Direttive Europee

European directives

Conforme "RoHS"
"RoHS" compliant
Non soggetto alla "RAEE"
Not subject to "WEEE"

Pesi e confezioni

Weights and packaging

Art. Codice prodotti <i>Product references</i>	g Peso netto <i>Net weight</i>	n° pz per sacco <i>per bag</i>	n° pz per scatola <i>per box</i>	n° pz per cartone <i>per carton</i>
2675/A	14,8		500	

Note

Notes

Note

Note

SERRAFILO AUTOMATICO DEGLI ART. 2675/..

PUSH WIRE TERMINALS OF ART. 2675/...

